





» *The Location*

Spectacular, visionary, unique. Tempodrom, the quick-change artist amongst Berlin's event venues. Established in 1980 as a circus tent on Potsdamer Platz and after various re-locations, rebuilt in 2001 on the grounds of the former Anhalter Bahnhof in a new form, today the building offers a variety of use and design possibilities that is hard to top.

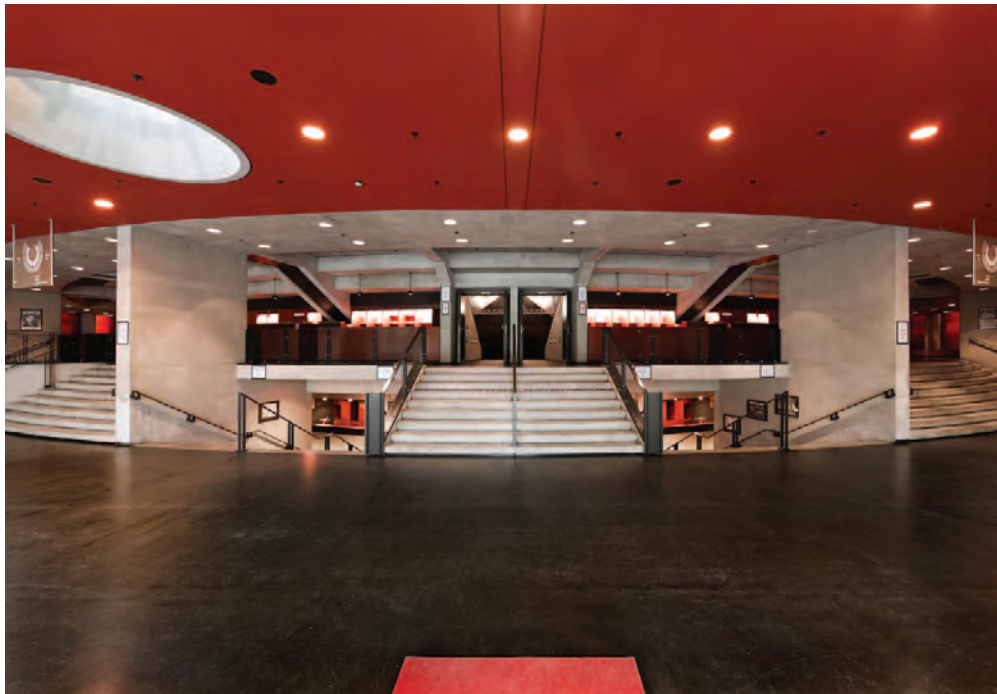
A multi-functional spatial concept combined with an aesthetically impressive architecture and an ecologically well thought out infrastructure creates the ideal conditions for events for from 40 to 4,000 guests. Depending on requirements, 5 rooms/areas can be used separately or in combination: the main arena, the small arena, foyer, forecourt and the roof terrace.



History

- » 1980 *Established as a circus tent*
- » 1999 *Construction of the new Tempodrom began*
- » 2001 *Premier event: European Film Prize*
- » 2008 *First climate-neutral venue in Germany*





» *The Foyer*

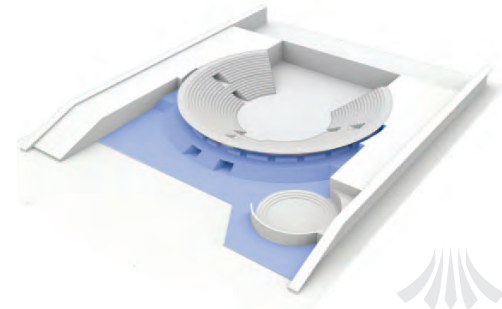
The Foyer extends in a semi-circle over 3 floors around the main arena. From here all rooms and areas in the building can be easily accessed, also by the disabled.

If more space is required, the small arena can be integrated into the foyer through the opening of mobile partition walls.



Details

- » *Area approx. 1,000 m²*
- » *Ceiling height 4.20 m*
- » *Capacity of up to approx. 1,200 persons*





» *The Foyer*

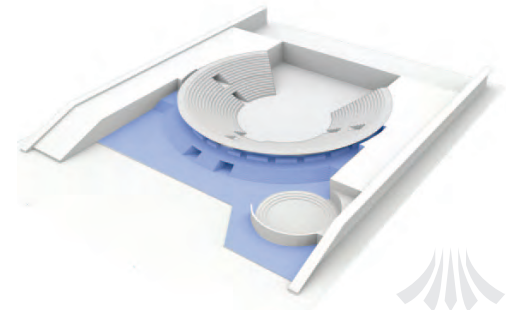
» *Variable staging forms*

From a classic reception to small exhibition spaces and large catering arena, to glittering after show parties, the Foyer provides the perfect surroundings for all types of event.



Details

- » *Area approx. 1,000 m²*
- » *Ceiling height 4.20 m*
- » *Capacity of up to approx. 1,200 persons*

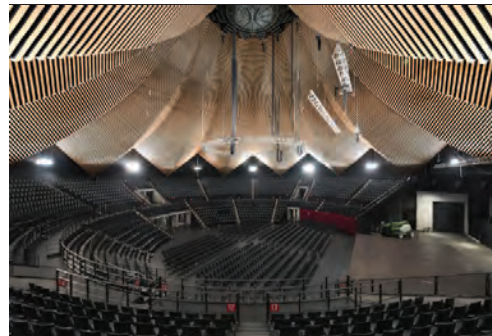




» *The Main Arena*

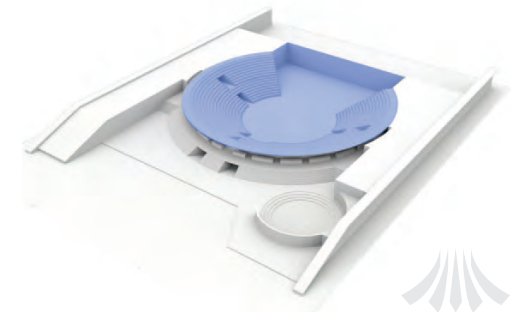
The Main Arena is the heart of the Tempodrom. Built as a modern amphitheatre the upper and lower circles provide an intimate proximity between the stage and guests. Flexible room elements create a variable space for the most diverse events such as conferences, congresses, gala dinners, product presentations, receptions, awards, TV shows and trade exhibitions.

The ring area with a diameter of 25 m can be individually enlarged by retracting the mobile lower stands. The architectural highlight of the building is created by the ceiling based historically on the circus tent that rises to a height of 30 m at the centre of the arena.



Details

- » *Area (total) approx. 2,800 m²*
- » *Area (ring/lower area) approx. 1,400 m²*
- » *Capacity of up to approx. 3,500 persons*

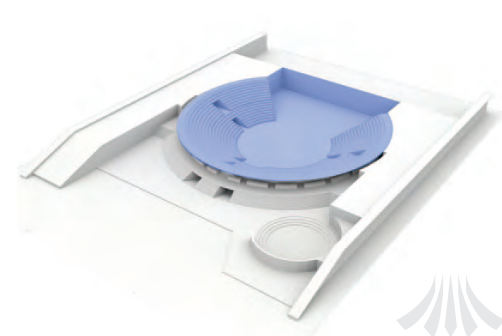




» The Main Arena

» Conferences (upper circle + lower circle + ring)

In the conference sector the Main Arena can with full use of all tribunes (in combination with a flexible catering concept and foyer enlargement, for example through marquees on the forecourt) accommodate approx. 3000 guests.

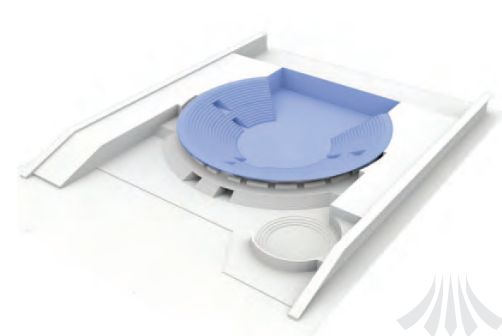




» The Main Arena

» Conferences (lower circle + ring)

For conferences with up to 1,400 guests, the upper circle seating of the Main Arena can be concealed through a suspended ceiling or lighting and decorative scenery either in full or in partially depending on requirements.

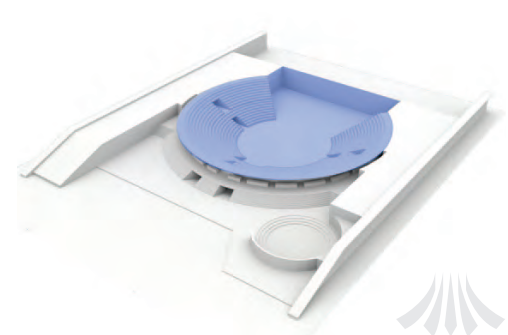
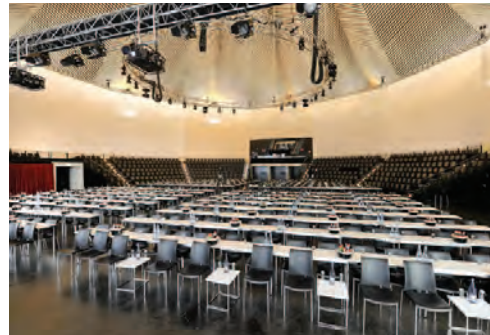




» The Main Arena

» Conferences (ring)

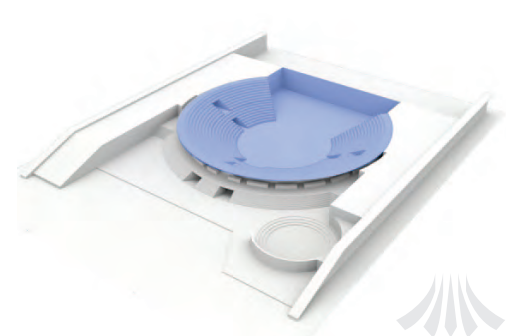
Through retracting the mobile lower circle tribunes, a generous conference area is created at ring-level for a variety of seating options, from classic rows to parliamentary variations with tables to a relaxed bistro option, anything is possible.





» **The Main Arena**
» **Gala dinner (round tables)**

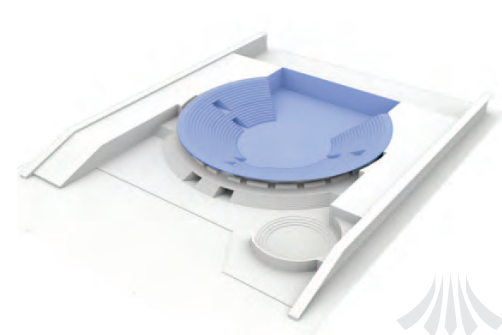
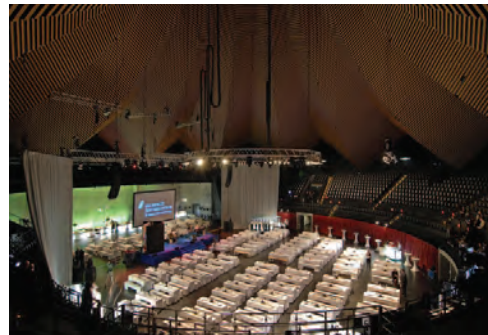
Gala dinners are one of the classics in the Tempodrom portfolio. Through retracting the lower tribunes, up to 800 guests can be accommodated at ring level, the upper circle can be artistically styled in a variety of ways or concealed.





» **The Main Arena**
» **Gala dinner (long tables)**

Through the use of long tables, the capacity can be increased for up to 1,000 guests, whereby the house stage is fully removed and the back-stage area can be used up to the rear wall of the house.

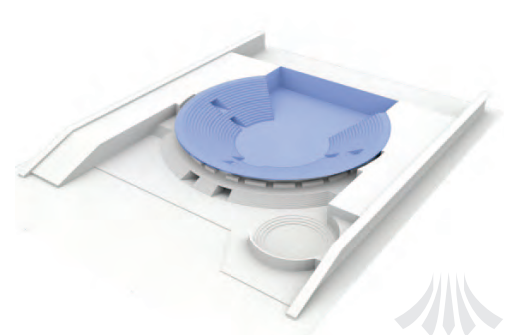




» The Main Arena

» Evening Events (mixed seating)

Evening events with a mix of standing and seated spaces can be implemented in many variations and sizes (up to approx. 2,000 guests), with or without a stage, with or without use of the tribunes, as well as with combined indoor and outdoor in combination with the foyer, forecourt and roof terrace.

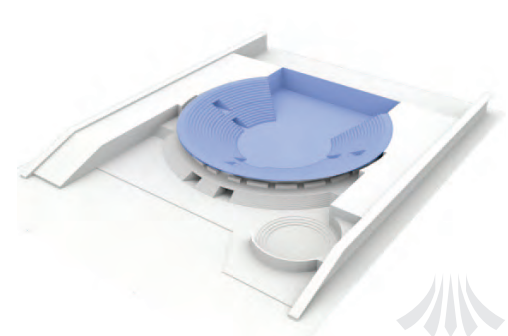




» The Main Arena

» Evening Events (special seating)

Whether exhibition and trade fair stands, catwalks, room in a room concepts or centre stage particularly in the scope of product presentations, fashion shows, award ceremonies or trade fairs, the Main Arena offers almost infinite fitting possibilities.





» *The Small Arena*

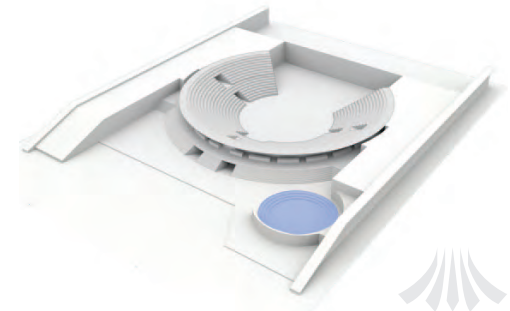
The highly versatile Small Arena is a separately usable venue with its own entrance and foyer. The all-rounder has a flexible stage as well as lighting and sound technology, accommodates up to 400 guests and with a base area of 115 m² adequate room for a variety of smaller events.

For larger events, the Small Arena can be joined to the surrounding foyer area but opening up the mobile partitions and in can be integrated into events in the Main Arena in a variety of ways.



Details

- » *Area (total) approx. 255 m²*
- » *Area (ring) approx. 115 m²*
- » *Capacity in accordance with seating*

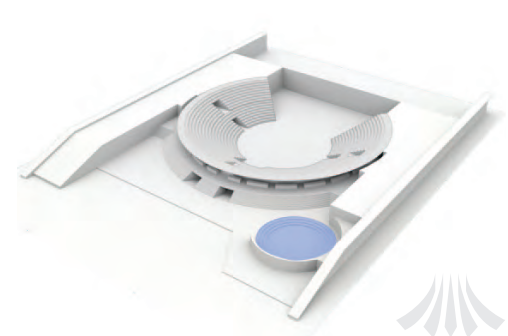




» The Small Arena

» Conferences

The circular and intimate scope of the Small Arena offers a somewhat alternative setting for conferences with up to 111 guests. With the additional use of the step seating/cushions the capacity can be increased to up to approx. 300 guests.

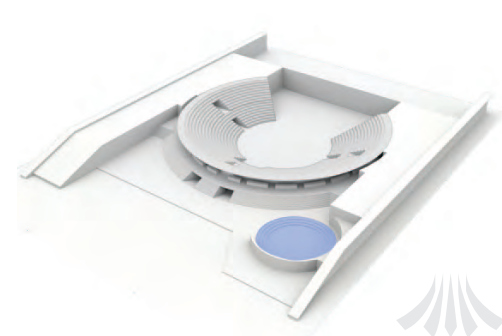




» The Small Arena

» Evening Events

Also for product presentations, exhibitions, festive receptions or glittering parties (with or without combination of the foyer to the Main Arena) the Small Arena has a big presence.





» *The Forecourt / Roof Terrace*

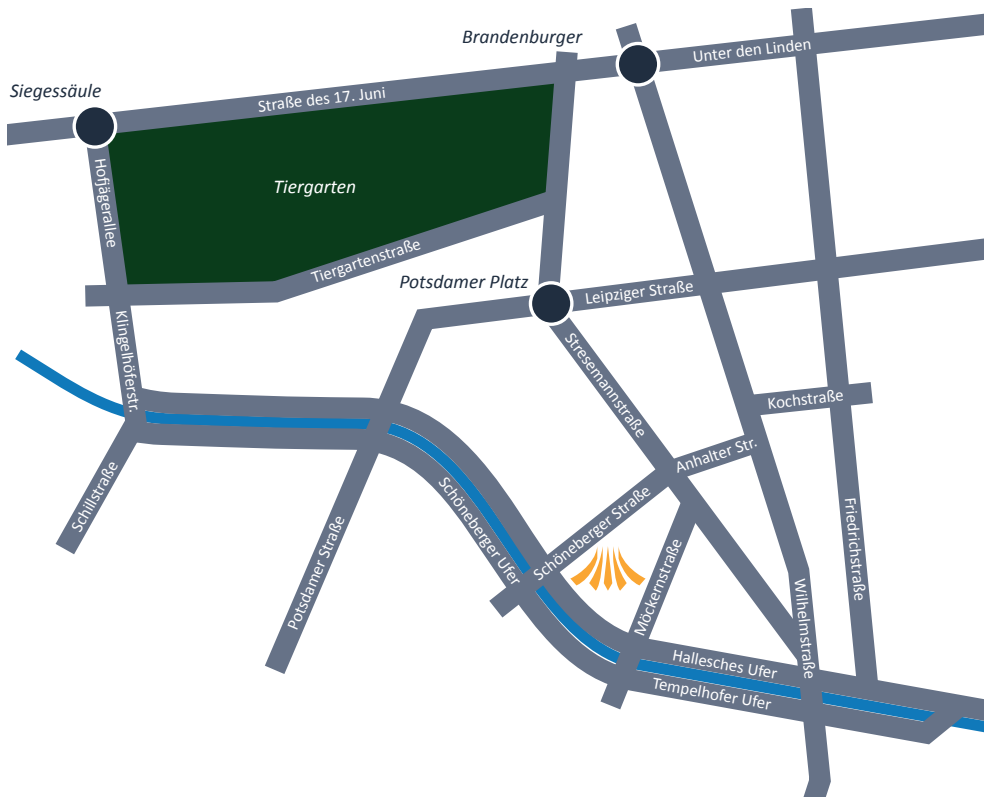
The Tempodrom is encompassed by a large forecourt and generous roof terrace that provides a versatile space for receptions, marquees, drive, catering area in all seasons. Both arenas can be used independently or combined for indoor/outdoor events.



Details

- » *Area (forecourt) approx* *2,000 m²*
- » *Area (roof terrace) approx.* *3,500 m²*
- » *Capacity in accordance with seating*





» Location and Contact

Tempodrom
 Betriebsgesellschaft mbH & Co. KG
 Möckernstraße 10
 10963 Berlin

Fon +49 (0) 30-747 37 - 0
 Fax +49 (0) 30-747 37 - 210
 info@tempodrom.de

Further information at www.tempodrom.de

- ✓ Central location at the heart of the capital
- ✓ At Anhalter Bahnhof in direct proximity to Potsdamer Platz
- ✓ Embedded in Europe's most modern hotel landscape currently with over 133,000 beds
- ✓ Bus, suburban rail and underground stations in the direct vicinity

Cooperation partners:

